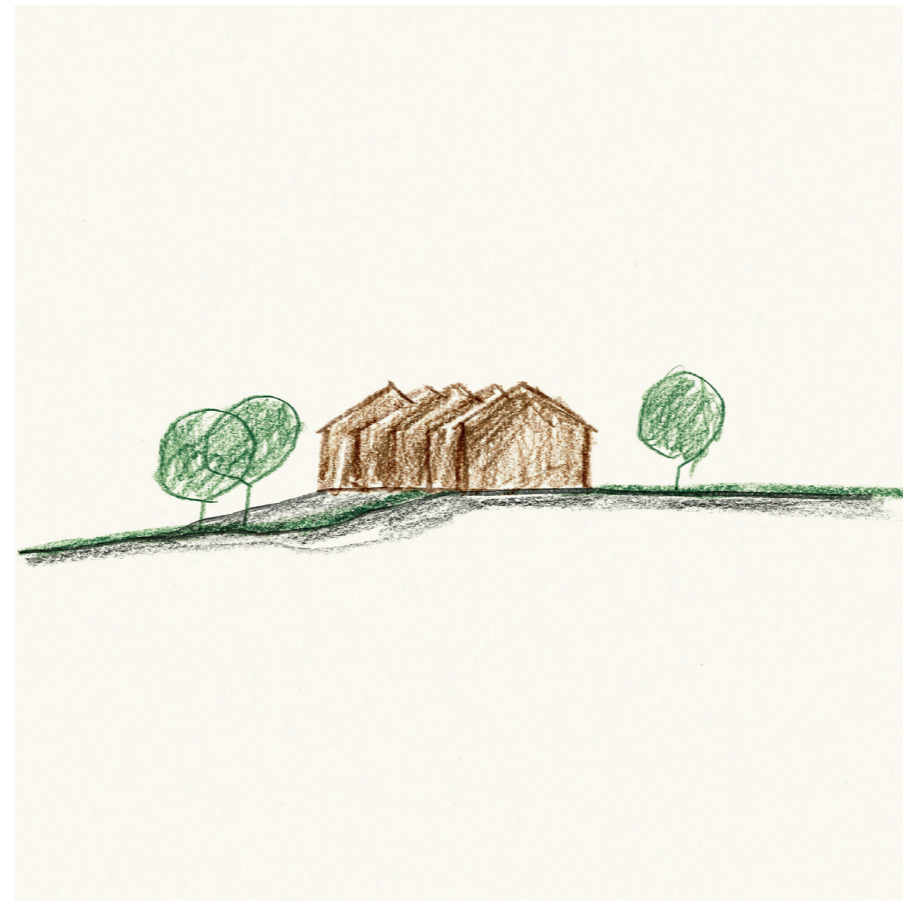


HEMMESTATORP

A F



151

ARRHOV FRICK

SERAFIM FASTIGHETER AB

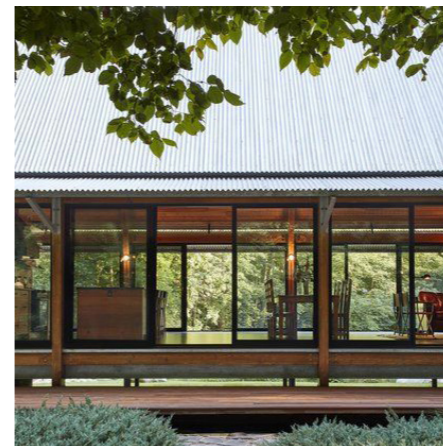
21.04.13

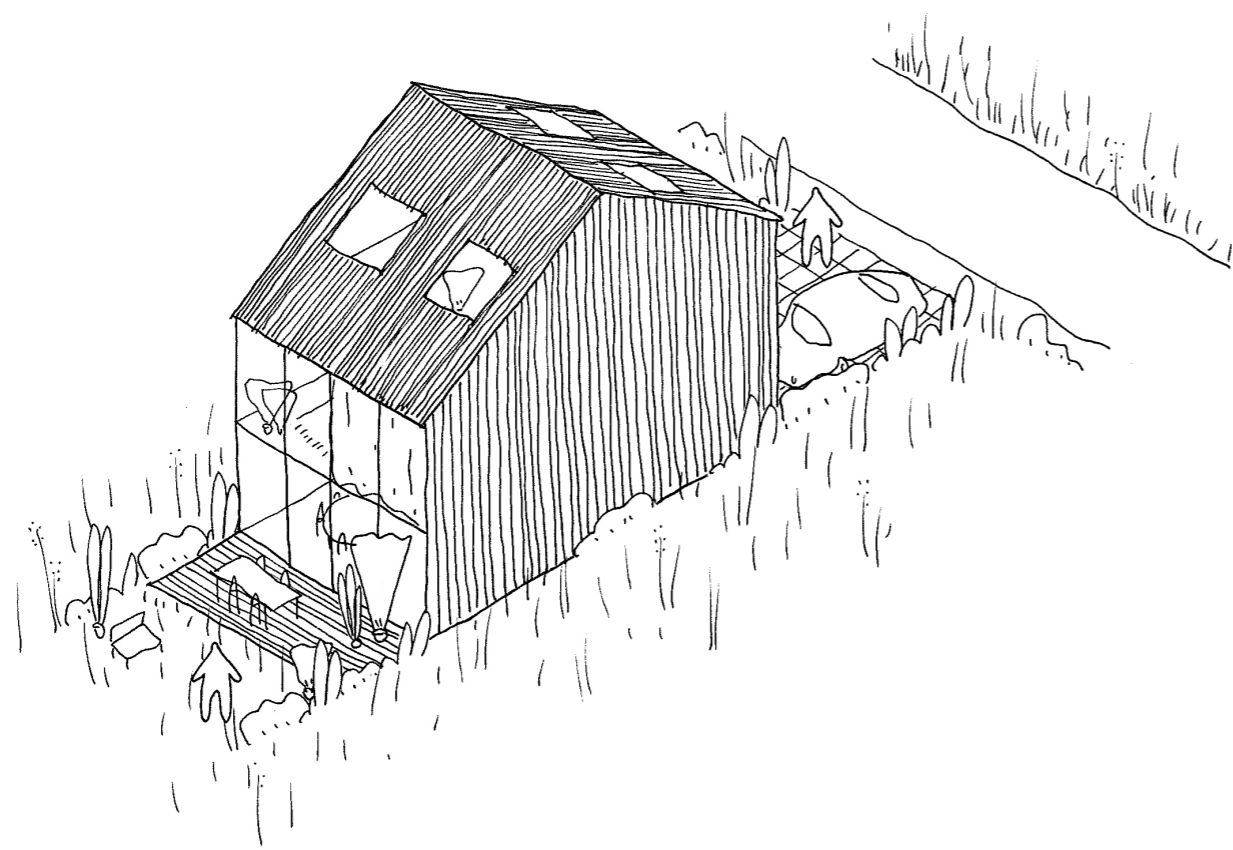
INNEHÅLL

- A.1 PLATSEN
- A.2 MATERIAL
- A.3 FÖRSLAG
- A.4 FÖRUTSÄTTNINGAR
- A.5 SITUATIONSPLAN
- A.6 SEKTIONER A/B/C 1:500
- A.7 SEKTIONER D/E 1:500
- A.8 SEKTIONER F/G/H 1:500
- A.9 SEKTION A 1:200
- A.10 SEKTION B/C 1:200
- A.11 SEKTION D/E 1:200
- A.12 ELEVATON F/G 1:200

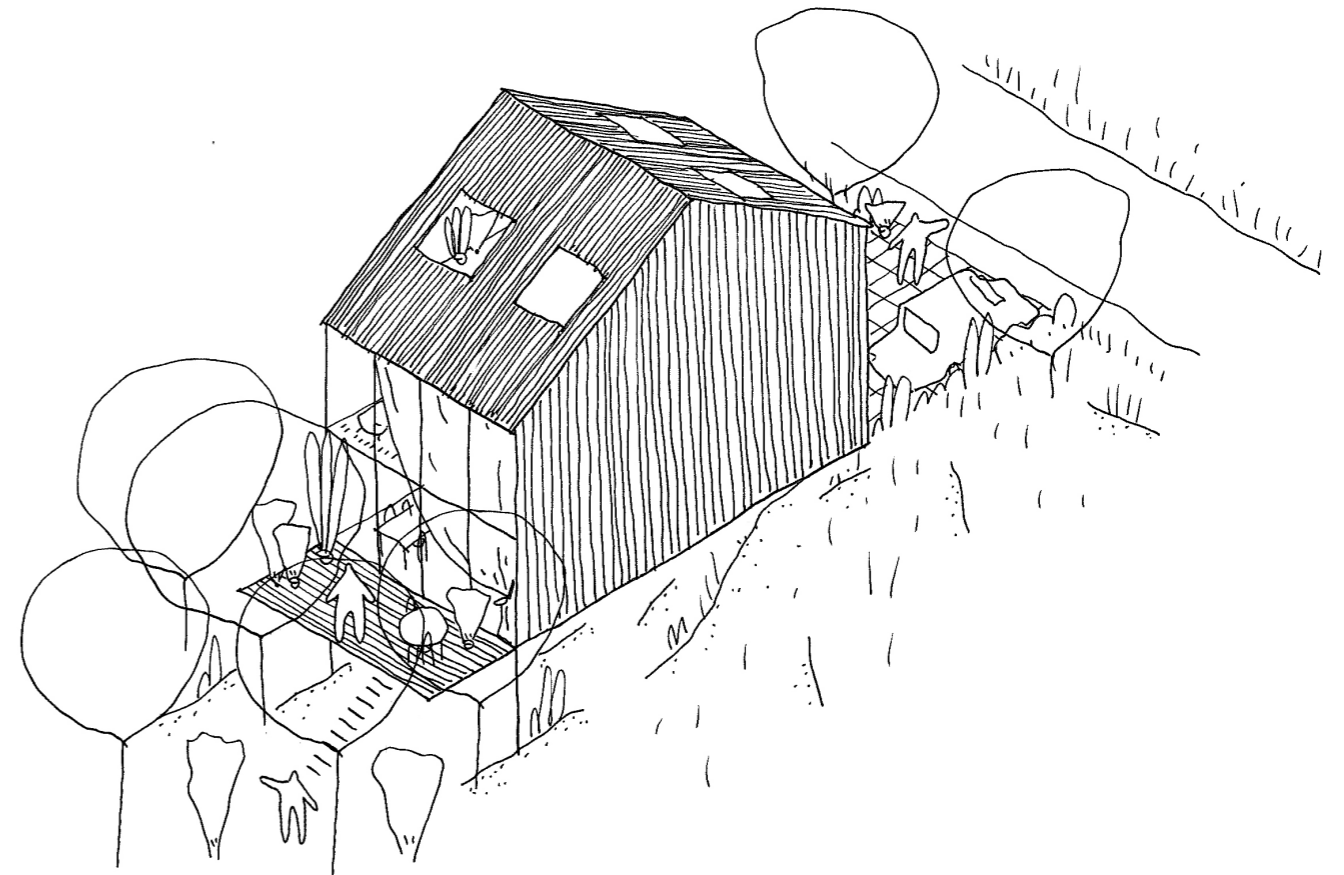


ARRHOV FRICK



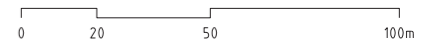


Grundläggning Alt A
Platta på mark



Grundläggning Alt B
Plintgrund

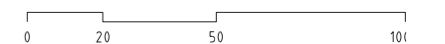
- Strandskyddslinje
- - - Skyddsavstånd från väg
- · - · - Byggbar zon
- - - - - Fastighetsgräns
- · · · · Ledningsrätt
- ⊕ Skyddsvärt träd
- Påtagligt naturvärde
- Högt naturvärde
- Befintliga byggnader

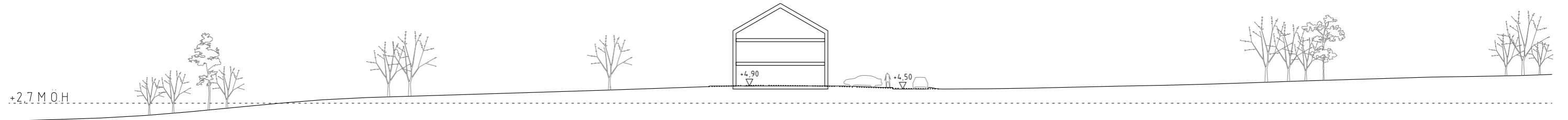


- Strandskyddslinje
- - - Skyddsavstånd från väg
- · - · - Byggbar zon
- - - - - Fastighetsgräns
- · · · · Ledningsrätt
- - - - - Mur/vall
- ⊕ Skyddsvärt träd
- Påtagligt naturvärde
- Högt naturvärde
- Väg
- GC- stråk
- Byggnader
- Gårdsmark
- Uteplatser
- Föreslagna lägen för transformatorstation

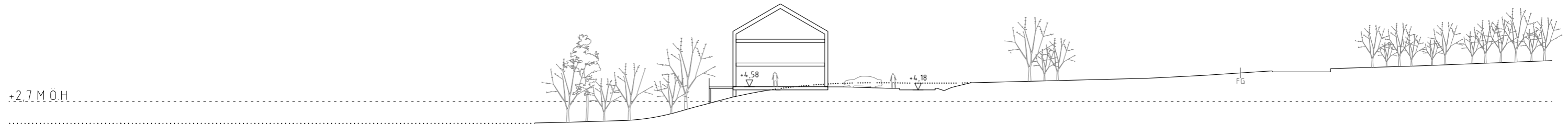


Mått per enhet: 6,2 x 12m
 Antal enheter: 23 st
 BYA: 1 710 m²
 Uppskattad total BTA: 4 280 m²
 (2,5 våningar)
 Parkeringsplatser: 46 st

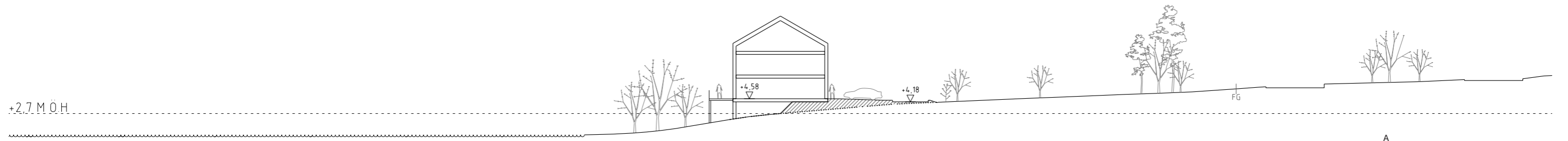




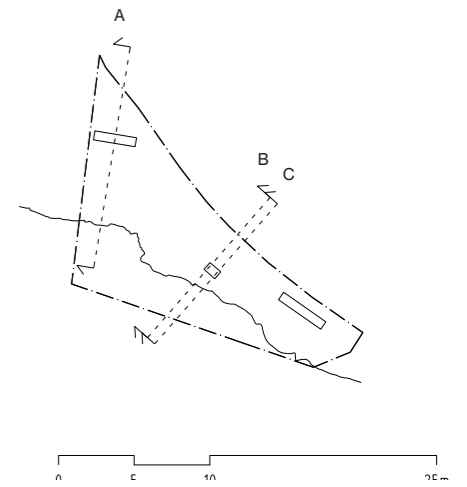
Sektion A
Grundläggning Alt A

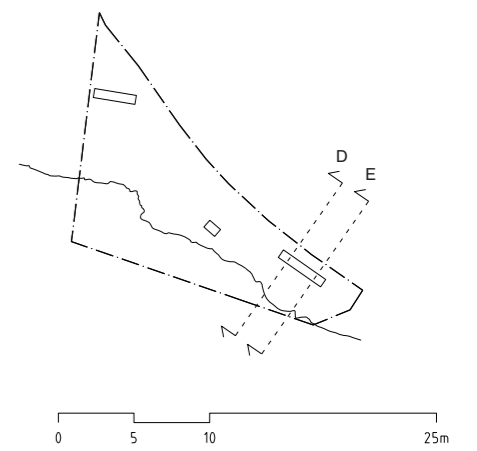
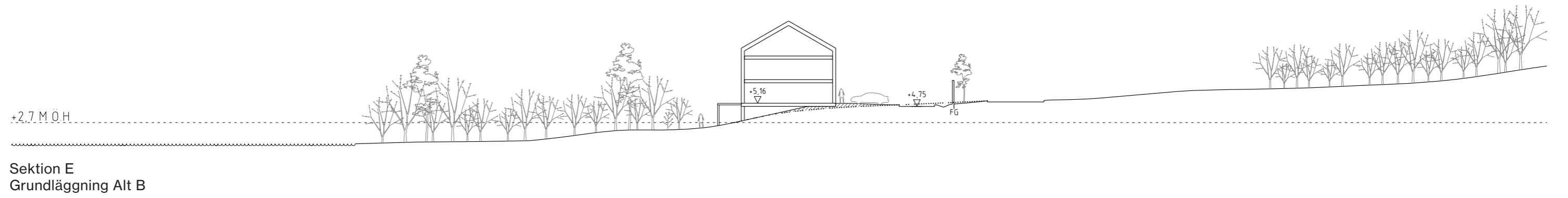
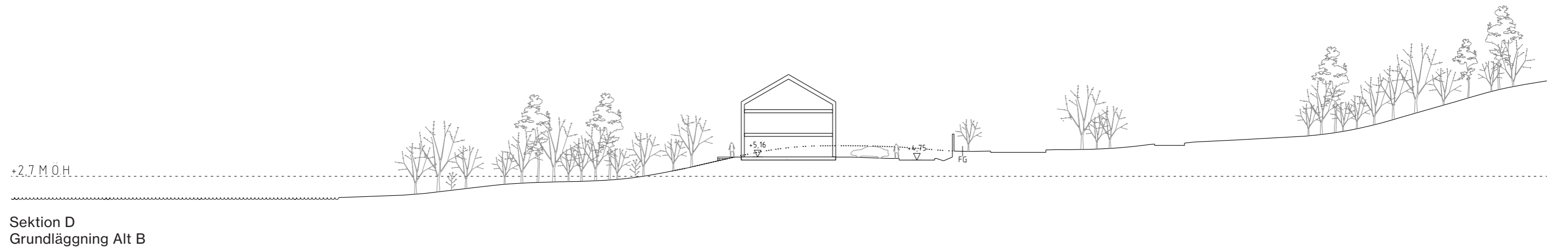


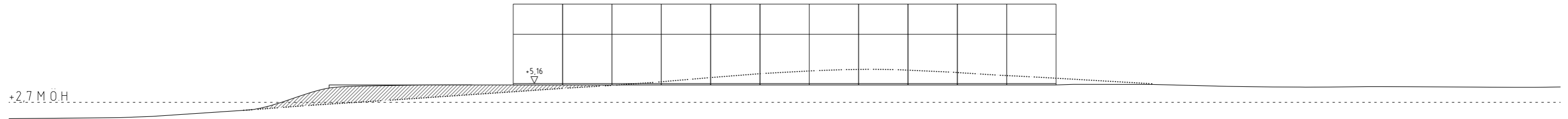
Sektion B
Grundläggning Alt B



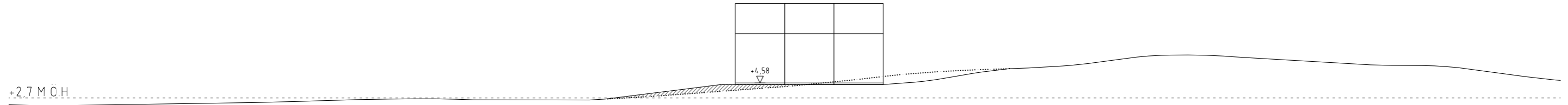
Sektion C
Grundläggning Alt B



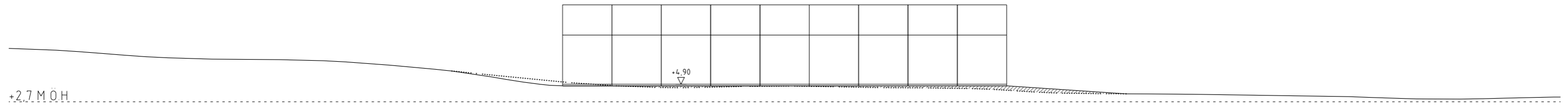




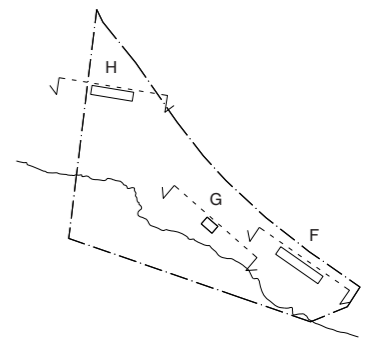
Sektion F
Grundläggning Alt B

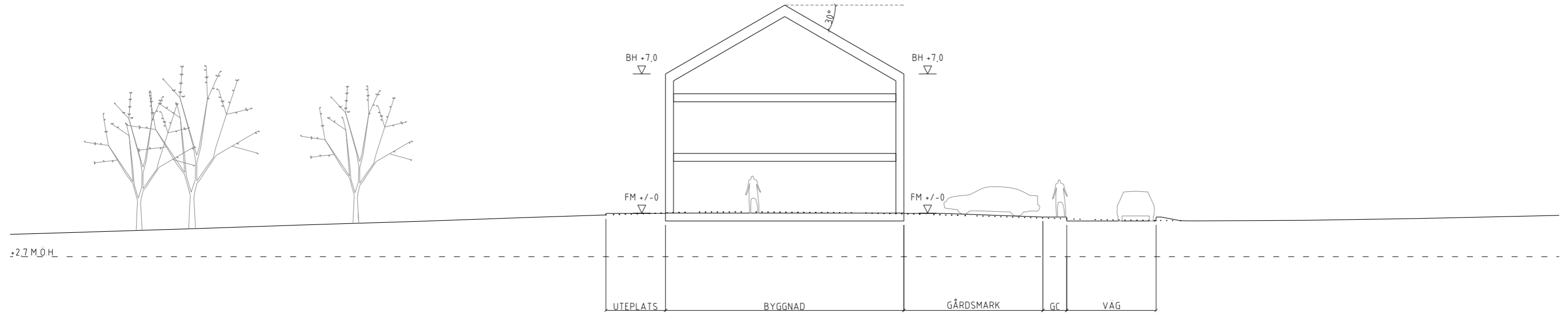


Sektion G
Grundläggning Alt B

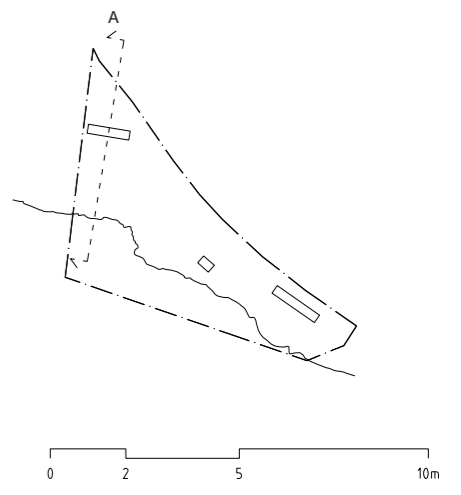


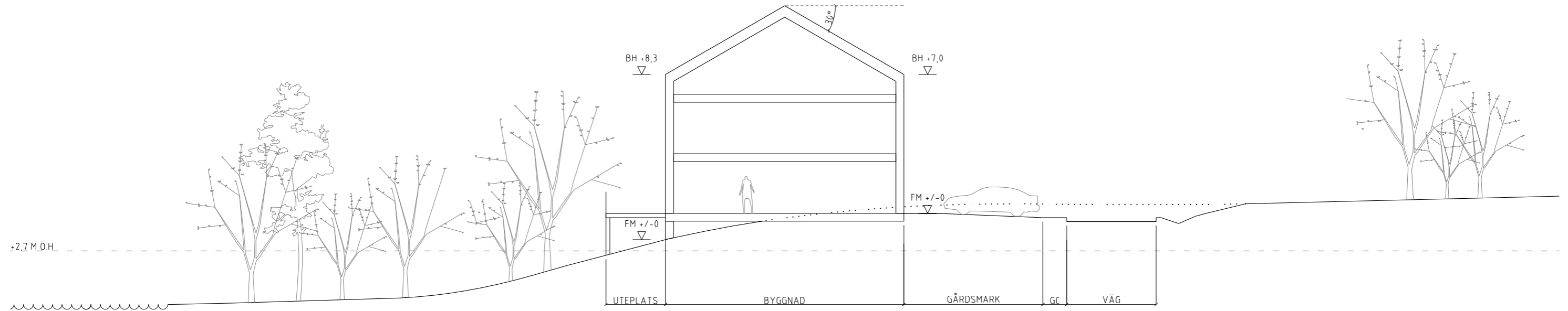
Sektion H
Grundläggning Alt A



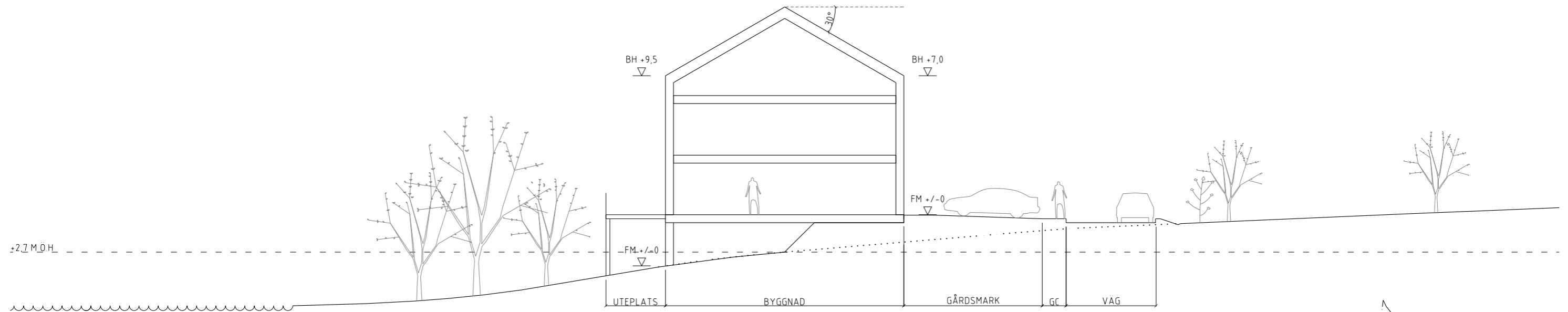


Sektion A
Grundläggning Alt A

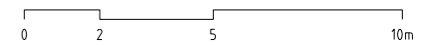
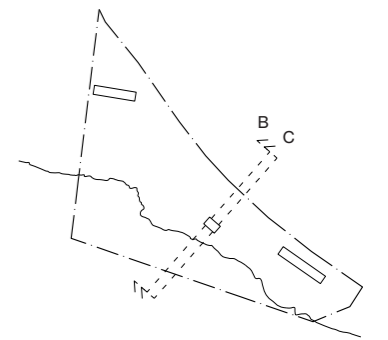


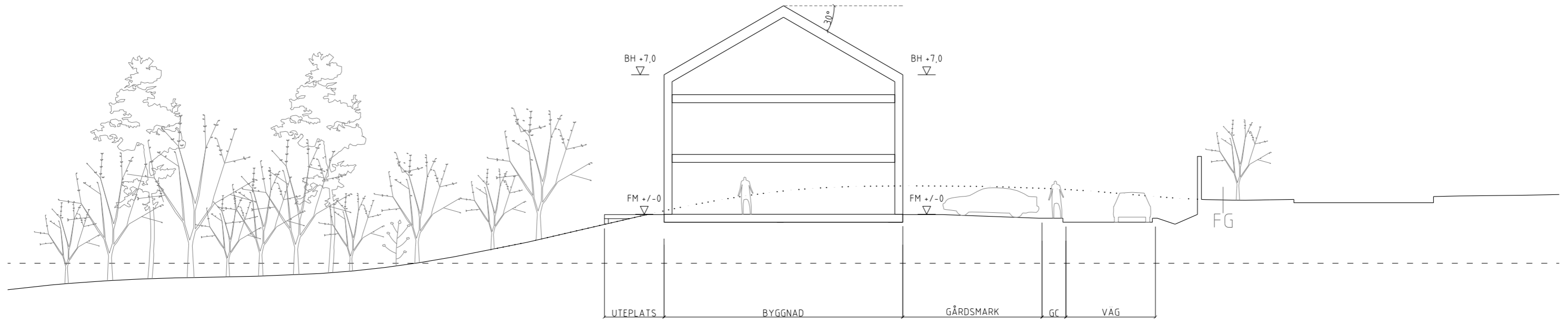


Sektion B
Grundläggning Alt B

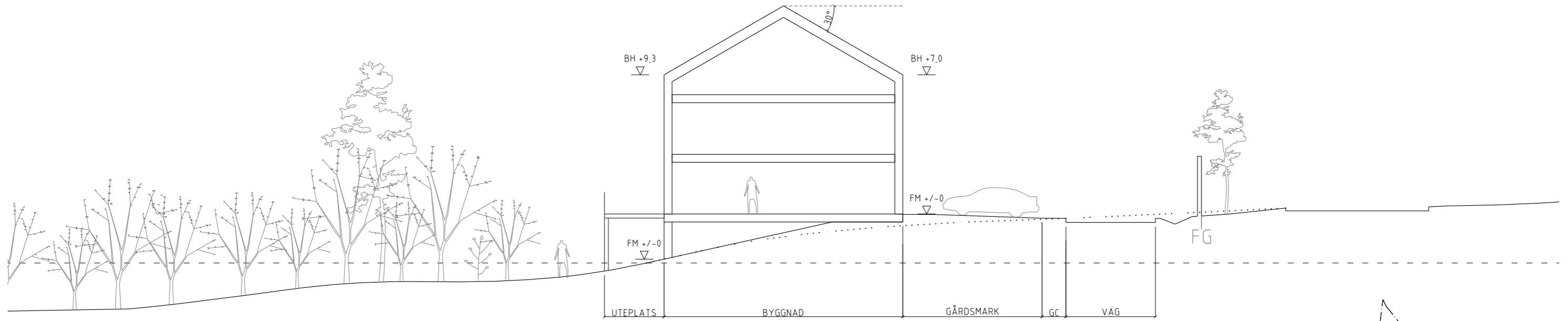


Sektion C
Grundläggning Alt B

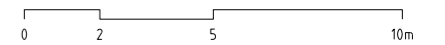
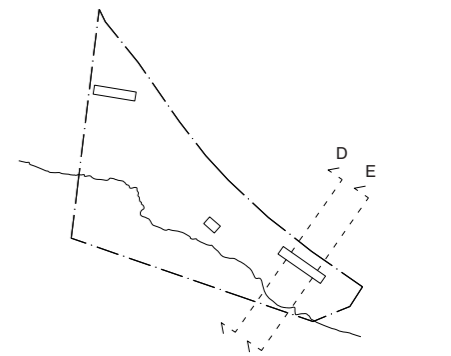


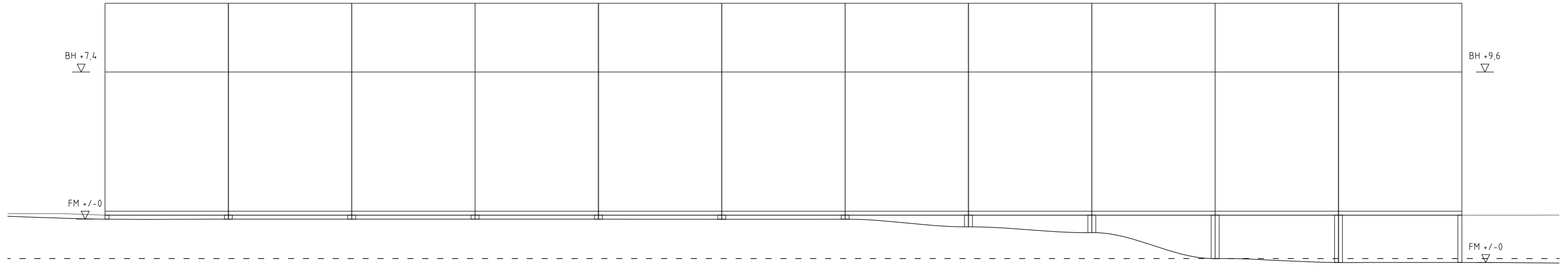


Sektion D
Grundläggning Alt B

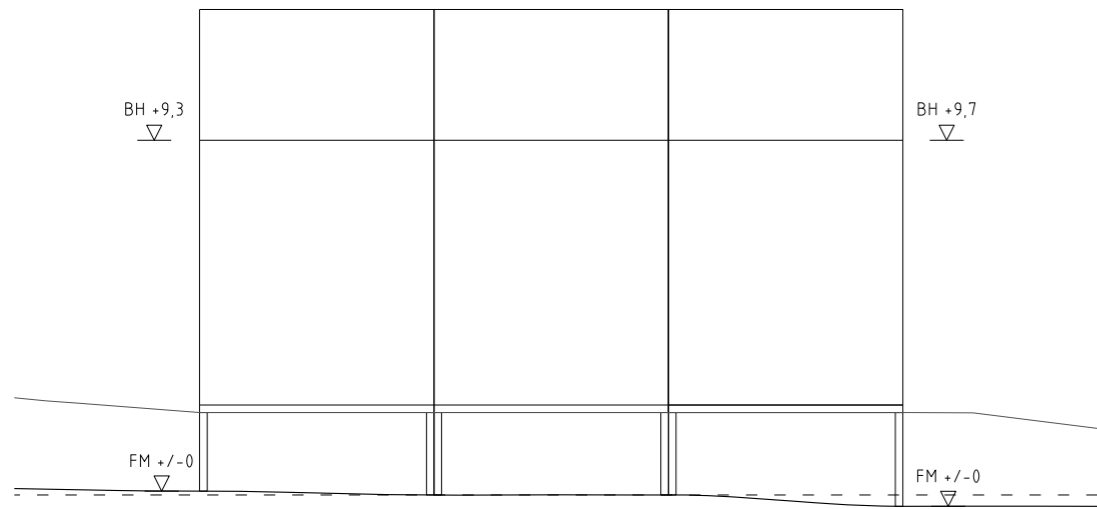


Sektion E
Grundläggning Alt B





Elevation F
Grundläggning Alt B



Elevation G
Grundläggning Alt B

